

## Installation, Operation, and Maintenance Instructions

### Overview

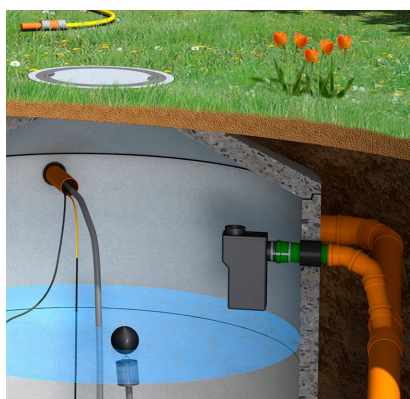
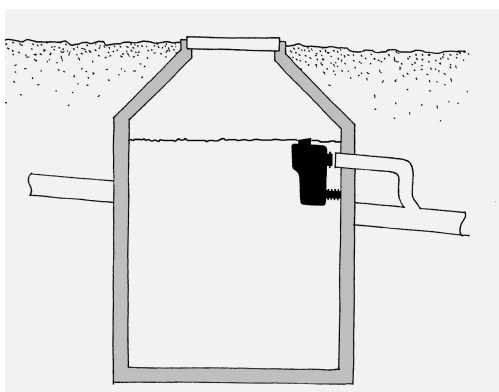
The Multi-Siphon Overflow Device (US 1002) serves as an overflow device by siphoning the water and skimming the surface debris out of the storage vessel. This unit prevents storm drain odors from reaching the storage vessel and comes with vermin protection and back-flow prevention. The brace pipe prevents tilting or tipping when the unit is full of water (12.5 lbs) and has a volume of 1.5 gallons.

### Materials

Housing: Impact-Resistant ABS Plastic  
Passive Vermin Guard: Stainless Steel

### Installation

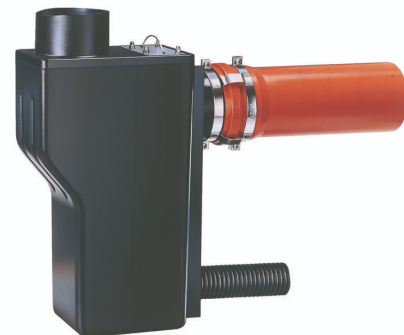
The Multi-Siphon Overflow Device is attached to a 4" bulkhead in the tank for overflow. This fitting is installed by the contractor if using a poly tank or should be specified in a custom-ordered fiberglass, galvanized or concrete tank. The device is mounted to the inside of the tank and secured to the 4" fitting with the supplied protective clamp. The supplied support strut is inserted in the small dimple in at the bottom of the device on the same side as the protective clamp. The other end of the support strut rests against the inside of the tank. This strut is designed to support the weight of the unit when full of water (12.5 lbs).



*Note: The Multi-Functional Overflow device should be positioned on the opposite end of the tank from the inlet to allow for the skimming action to have a full effect on the water in the tank.*

### Maintenance

None



PN: US 1002

