

## Overview

The smoothing inlet functions as a brake to slow the incoming pre-filtered water. The construction provides at the same time a calmed, dispersed water outflow upwards into the storage. By this it prevents stirring up the soil sediment of the storage and distributes the fresh rainwater.

## Item No.

4" - EB 0300

6" - EB 0302

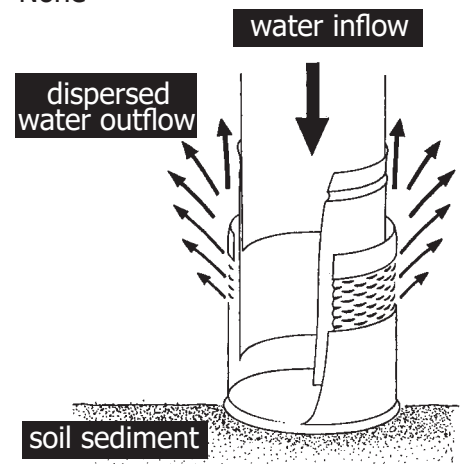
8" - EB 0304

## Material

Stainless Steel

## Maintenance

None



## Installation

The Smoothing Inlet is designed to connect to an S&D or SDR 35 pipe from the vortex filter inside the rainwater storage tank. The inlet pipe should come through the tank wall and affixed with an elbow to point the end of the pipe toward the bottom of the tank. The downward inlet pipe should be cut approximately 3" short of the bottom. Swivel the inlet pipe to the side and slide on the Smoothing Inlet to the lip. Then return the pipe back to the perpendicular position with the Smoothing Inlet sitting on the bottom of the tank. The Smoothing Inlet does not need to be glued or fastened to the inlet pipe.

### Note:

The Smoothing Inlet and overflow of a tank should always be on opposite ends to create the proper flow of the harvested rainwater to ensure the highest quality water available.

It is recommended that the inlet pipe be slid into the Smoothing Inlet sleeve prior to gluing the inlet pipe to the elbow.



**Rainwater Management Solutions, Inc.**

2550 Shenandoah Ave. NW  
Roanoke, VA 24017

+1 866-653-8337 | 540-375-6750

[www.rainwatermanagement.com](http://www.rainwatermanagement.com)